

# GRADING, CONCRETE & OTHER REPAIRS

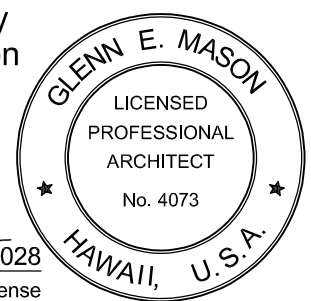
## HISTORIC KAKAAKO PUMP STATION

653 ALA MOANA BOULEVARD, HONOLULU, HAWAII 96813  
 TMK: 2-1-015:063 CONTRACT NO.: IFB HCDA-AMT-05-2026



119 Merchant Street, Suite 501  
 Honolulu, Hawaii 96813  
 808 536 0556  
 ARCHITECTURE & HISTORIC CONSULTING

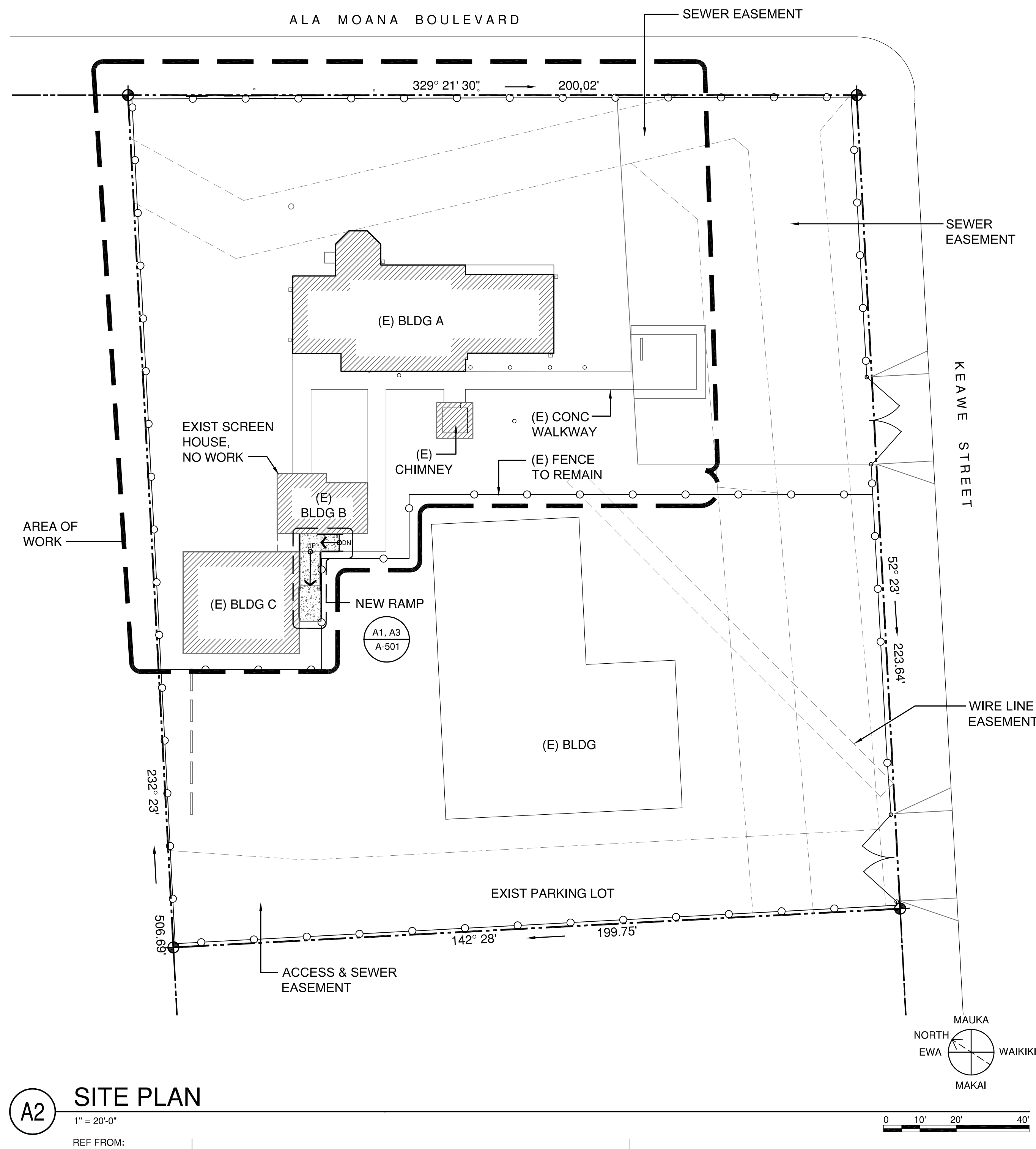
This work was prepared by me or under my supervision and construction of this project will be under my observation.



### ABBREVIATIONS

AB	ANCHOR BOLT	FOF	FACE OF FINISH	PTDR	PAPER TOWEL DISPENSER AND RECEPTACLE
AC	ASPHALTIC CONCRETE	FOS	FACE OF STUD	PTN	PARTITION
A/C	AIR CONDITIONING	FP	FIRE PROTECTION	QT	QUARRY TILE
ACC	ACCESSIBLE	FR	FRAME	QTR	QUARTER
ACOUS	ACOUSTIC	FS	FULL SIZE	R	RADIUS; RISER
AD	AREA DRAIN	FT	FOOT OR FEET	RD	ROOF DRAIN
ADJ	ADJUSTABLE; ADJACENT	FTG	FOOTING	REF	RECEPTACLE
AGGR	AGGREGATE	FURG	FURRING	REF	REFRIGERATOR; REFERENCE
ALUM	ALUMINUM	FUT	FUTURE	REIN	REINFORCE
ALT	ALTERNATE	G	GROUND	REQD	REQUIRED
APPROX	APPROXIMATE	GA	GAUGE	RESIL	RESILIENT
ARCH	ARCHITECTURAL	GALV	GALVANIZED	REG	REGISTER
ASB	ASBESTOS	GB	GRAB BAR	RM	ROOM
ASPH	ASPHALT	GI	GALVANIZED IRON	RND	ROUND
BD	BOARD	GL	GLASS	RO	ROUGH OPENING
BLDG	BUILDING	GLZ	GLAZING	RWD	REDWOOD
BM	BEAM	GYP	GYP SUM	RWL	RAIN WATER LEADER
BOT	BOTTOM	H	HIGH	S	SOUTH
BRKT	BRACKET	HB	HOSE BIBB	SC	SOLID CORE
BUR	BUILT UP ROOFING	HC	HOLLOW CORE	SCD	SEAT COVER DISPENSER
CAB	CABINET	HDPE	HIGH DENSITY POLYETHYLENE	SCHED	SCHEDULE
CBB	CEMENTITIOUS BACKER BOARD	HDWD	HARDWOOD	SCRN	SCREEN
CEM	CEMENT	HDW	HARDWARE	SD	SOAP DISPENSER
CER	CERAMIC	HM	HEX HEAD MACHINE BOLT	SECT	SECTION
CI	CAST IRON	HM	HOLLOW METAL	SECT	SECTION
CLG	CEILING	HORIZ	HORIZONTAL	SHV	SHELVING
CLO	CLOSET	HT	HEIGHT	SHR	SHOWER
CLR	CLEAR	ID	INSIDE DIAMETER	SHT	SHEET
CMU	CONCRETE MASONRY UNIT	INCL	INCLUDED	SIM	SIMILAR
CNTR	COUNTER	INFO	INFORMATION	SLNT	SEALANT
CO	CLEANOUT	INSUL	INSULATION	SLDG	SLIDING
COND	CONDITION	INT	INTERIOR	SND	SANITARY NAPKIN DISPENSER
COL	COLUMN	JAL	JALOUSIE	SNDU	SANITARY NAPKIN DISPOSAL UNIT
CONC	CONCRETE	JAN	JANITOR	SEWER	SEWER
CONN	CONNECT	KIT	KITCHEN	SPEC	SPECIFICATION
CONSTR	CONSTRUCTION	KOP	KNOCK OUT PANEL	SQ	SQUARE
CONT	CONTINUOUS	KOP	KNOCK OUT PANEL	SST	STAINLESS STEEL
CONTR	CONTRACTOR	LAM	LAMINATE	SS	SERVICE SINK
CORR	CORRIDOR	LAV	LAVATORY	STA	STATION
CT	CERAMIC TILE	LR	LIVING ROOM	STC	SOUND TRANSMISSION CLASS
CTR	CENTER	LT	LIGHT	STD	STANDARD
CSK	COUNTER SUNK	LT	LIGHT	STL	STEEL
D	DEEP, DEPTH	MACH	MACHINE	STOR	STORAGE
DBL	DOUBLE	MAX	MAXIMUM	STRUCT	STRUCTURAL
DEMO	DEMOLITION	MC	MEDICINE CABINET	SURR	SURROUND
DEPT	DEPARTMENT	MECH	MECHANICAL	SUSP	SUSPENDED
DET	DETAIL	MEMB	MEMBRANE	SYMM	SYMMETRICAL
DIA	DIAMETER	MT	MOUNT	T	TREAD
DIM	DIMENSION	MTL	METAL	TB	TOWEL BAR
DISP	DISPENSER	MFR	MANUFACTURER	TC	TOP OF CURB
DR	DOOR	MH	MANHOLE	TEL	TELEPHONE
DS	DOWNSPOUT	MIN	MINIMUM	TMPD	TEMPERED
DSP	DRY STANDPIPE	MIRR	MIRROR	TER	TERRAZZO
DWG	DRAWING	MISC	MISCELLANEOUS	T&G	TONGUE AND GROOVE
DWR	DRAWER	MO	MASONRY OPENING	THK	THICKNESS
E	EAST	MTD	MOUNTED	THRES	THRESHOLD
EA	EACH	MTG	MOUNTING	TOP	TOP OF PAVEMENT
EJ	EXPANSION JOINT	MULL	MULLION	TPD	TOILET PAPER DISPENSER
EL	ELEVATION	MOPR	MOP RACK	TPH	TOILET PAPER HOLDER
ELEC	ELECTRICAL	N	NORTH	TOW	TOP OF WALL
EMER	EMERGENCY	NIC	NOT IN CONTRACT	TSCD	TOILET SEAT COVER DISPENSER
ENCL	ENCLOSURE	NO or #	NUMBER	TYP	TYPICAL
EP	ELECTRICAL PANELBOARD	NOM	NOMINAL	UBC	UNIFORM BUILDING CODE
EPS	EXPANDED POLYSTYRENE BOARD	NTS	NOT TO SCALE	UNO	UNLESS NOTED OTHERWISE
EQ	EQUAL	OA	OVERALL	UL	UNDERWRITERS LABORATORY
EQUIP	EQUIPMENT	OGL	OBSCURE GLASS	VCT	VINYL COMPOSITION TILE
EWC	ELECTRIC WATER COOLER	OC	ON CENTER	VIF	VERIFY IN FIELD
EXP	EXPANSION; EXPOSED	OD	OUTSIDE DIAMETER (DIM)	VTR	VENT THRU ROOF
EXT	EXISTING	OFCI	OWNER FURNISHED/ CONTRACTOR INSTALLED	VERT	VERTICAL
EXT	EXTERIOR	OFOI	OWNER FURNISHED/ OWNER INSTALLED	VEST	VESTIBULE
FA	FIRE ALARM	OFF	OFFICE	W	WEST
FB	FLAT BAR	OH	OVERHANG	W/	WITH
FD	FLOOR DRAIN	OPNG	OPENING	WC	WATER CLOSET
FDTN	FOUNDATION	OPP	OPPOSITE	WD	WOOD
FE	FIRE EXTINGUISHER	PC	PIECE	WDW	WINDOW
FEC	FIRE EXTINGUISHER CABINET	PL	PLATE	WH	WATER HEATER
FHC	FIRE HOSE CABINET	PL GL	PLATE GLASS	W/O	WITHOUT
FIN	FINISH	PLAM	PLASTIC LAMINATE	WO	WHERE OCCURS
FIXT	FIXTURE	PLAS	PLASTER	WP	WATERPROOFING
FLR	FLOOR	PLBG	PLUMBING	WPM	WATERPROOFING MEMBRANE
FLASH	FLASHING	PLYWD	PLYWOOD	WR	WATER REPELLENT
FLUOR	FLUORESCENT	PNL	PANEL	WSCOT	WAINSCOT
FOC	FACE OF CONCRETE	PR	PAIR	WT	WEIGHT
		PRCST	PRECAST	WWM	WELDED WIRE MESH

### SITE PLAN



### SHEET INDEX

NO	SHEET	DESCRIPTION
1	001	TITLE SHEET
<b>GENERAL</b>		
2	GD101	SITE PLAN - DEMO
3	G-101	SITE PLAN - GRADING
<b>ARCHITECTURAL</b>		
4	A-000	BMP STANDARD NOTES AND DETAILS
4	AS101	SITE PLAN - ESCP CONTROL MEASURES
4	A-501	RAMP DETAILS

### PROJECT DATA

OWNER: STATE OF HAWAII  
 653 ALA MOANA BOULEVARD  
 HONOLULU, HI 96813

TAX MAP KEY: 2-1-15: 63

LOT AREA: 45,694 SQ FT

FLOOR AREA: 3,332 SQ FT  
 (3 BUILDINGS)

ZONING: COMMERCIAL

SMA / SHORELINE: NOT IN SMA

SPECIAL DISTRICT: KAKAAKO COMMUNITY DEVELOPMENT DISTRICT

STATE LAND USE: URBAN DISTRICT

FLOOD ZONE: X- BEYOND 500 YEAR FLOOR PLAIN

### GENERAL NOTES

1. TYPICAL MATERIAL INDICATIONS ON INTERIOR ELEVATIONS ARE CALLED OUT ON ELEVATION 'A'. TYPICAL MATERIAL INDICATIONS ON EXTERIOR ELEVATIONS ARE CALLED OUT ON THE FRONT ELEVATION.
2. COMPLY WITH THE LATEST CITY, STATE, AND FEDERAL LAWS, BUILDING CODES, THEIR ADDITIONS, ADDENDA, AND AMENDMENTS IN THE CONSTRUCTION OF THIS PROJECT.
3. USE DIMENSIONS NOTED ON DRAWINGS ONLY. DO NOT SCALE DIMENSIONS FROM THE DRAWINGS.
4. REPAIR ALL DAMAGE CAUSED BY CONSTRUCTION OF THIS PROJECT.
5. ALL ITEMS & MATERIALS NOTED WITHIN THESE DRAWINGS ARE NEW UNLESS INDICATED OTHERWISE.
6. FIRE SAFETY DURING CONSTRUCTION, ALTERATION OR DEMOLITION SHALL BE IN ACCORDANCE WITH NFP 1, FIRE CODE, 2012 EDITION.

MARK	DATE	DESCRIPTION
ISSUE:		
PROJECT NO:	25102	
CAD DWG FILE:	G-001 - Title Sheet - Grading and Conc	
PLOTTED:	May 01, 2026 - 1:00PM	
DESIGNED BY:	GM	
DRAWN BY:	EC	
CHECKED BY:	GM	
SHEET TITLE		
TITLE SHEET		
<b>001</b>		
SHEET	1	OF

1

2

3

EXHIBIT B

4

5

EXIST SIDEWALK TO REMAIN

4.45 (E)

4.52 (E)

4.6 (E)

4.71 (E)

PROPERTY LINE

(E) FENCE TO REMAIN

REMOVE (E) CONC & CURBS

SMH

REMOVE CONC

BUILDING A

EXIST GRAVEL PKG LOT

(E) ASPHALT PAVING

(E) HANDICAPPED PARKING

(E) DRIVEWAY APRON

(E) LIGHT BOLLARDS TO REMAIN (TYP FOR 5)

(E) CHIMNEY

(E) CONC WALK, 5'-0" WIDE

(E) MONITORING WELL

REMOVE CONC TO FACE OF BLDG

BUILDING B (NO WORK)

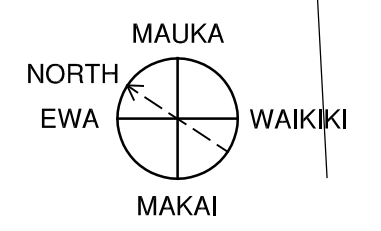
(E) FENCE TO REMAIN

APPROX LOCATION OF (E) UNDERGROUND RESERVOIR

BUILDING C

(E) BUILDING TO REMAIN

SAWCUT & REMOVE CONC



# A1 SITE PLAN - DEMO

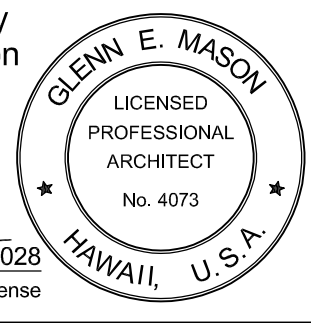
1/8" = 1'-0"

REF FROM:



119 Merchant Street, Suite 501  
Honolulu, Hawaii 96813  
808 536 0556  
ARCHITECTURE & HISTORIC CONSULTING

This work was prepared by me or under my supervision and construction of this project will be under my observation.  
*Glenn E. Mason*  
Signature      4/30/2028  
Expiration Date of the License



PROJECT  
**GRADING, CONCRETE AND OTHER REPAIRS  
HISTORIC KAKAAKO  
PUMP STATION**  
653 ALA MOANA BLVD  
HONOLULU, HAWAII 96813  
TMK: 2-1-015:063

MARK	DATE	DESCRIPTION
ISSUE:		
PROJECT NO:	25102	
CAD DWG FILE:	GD101 - Site Plan Demo.dwg	
PLOTTED:	May 01, 2026 - 3:47PM	
DESIGNED BY:	GM	
DRAWN BY:	EC	
CHECKED BY:	GM	

SHEET TITLE  
SITE PLAN - DEMO

**GD101**  
SHEET 2 OF

1

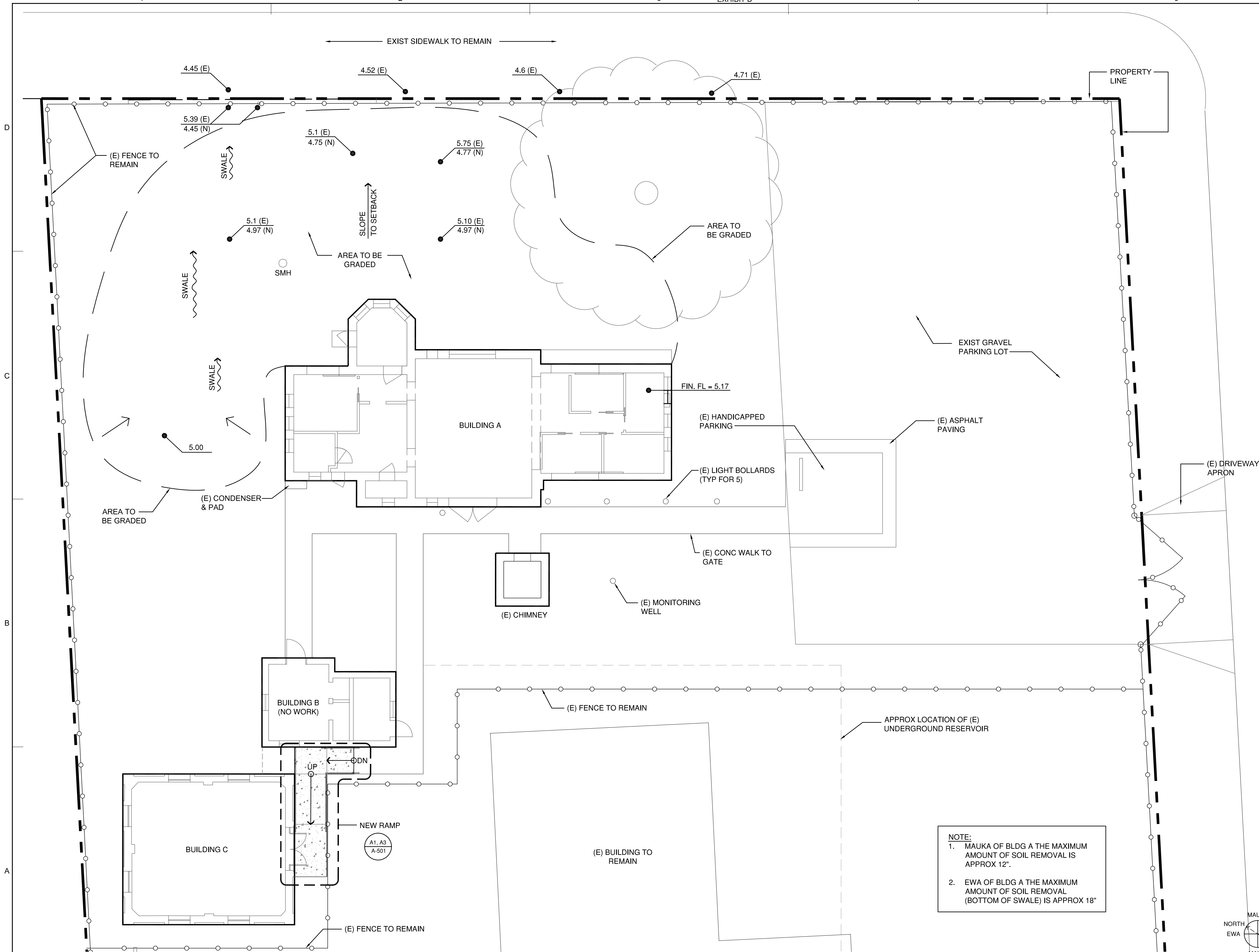
2

3

EXHIBIT B

4

5

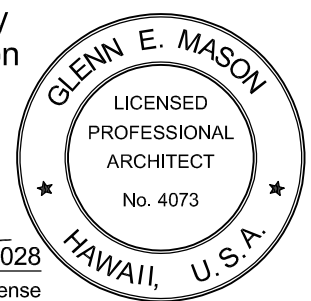


119 Merchant Street, Suite 501  
Honolulu, Hawaii 96813  
808 536 0556  
ARCHITECTURE & HISTORIC CONSULTING

This work was prepared by me or under my supervision and construction of this project will be under my observation.

*Glenn E. Mason*  
Signature

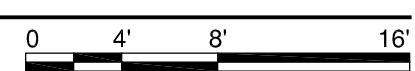
4150/2028  
Expiration Date of the License



PROJECT  
**GRADING, CONCRETE AND OTHER REPAIRS HISTORIC KAKAAKO PUMP STATION**  
653 ALA MOANA BLVD  
HONOLULU, HAWAII 96813  
TMK: 2-1-015:063

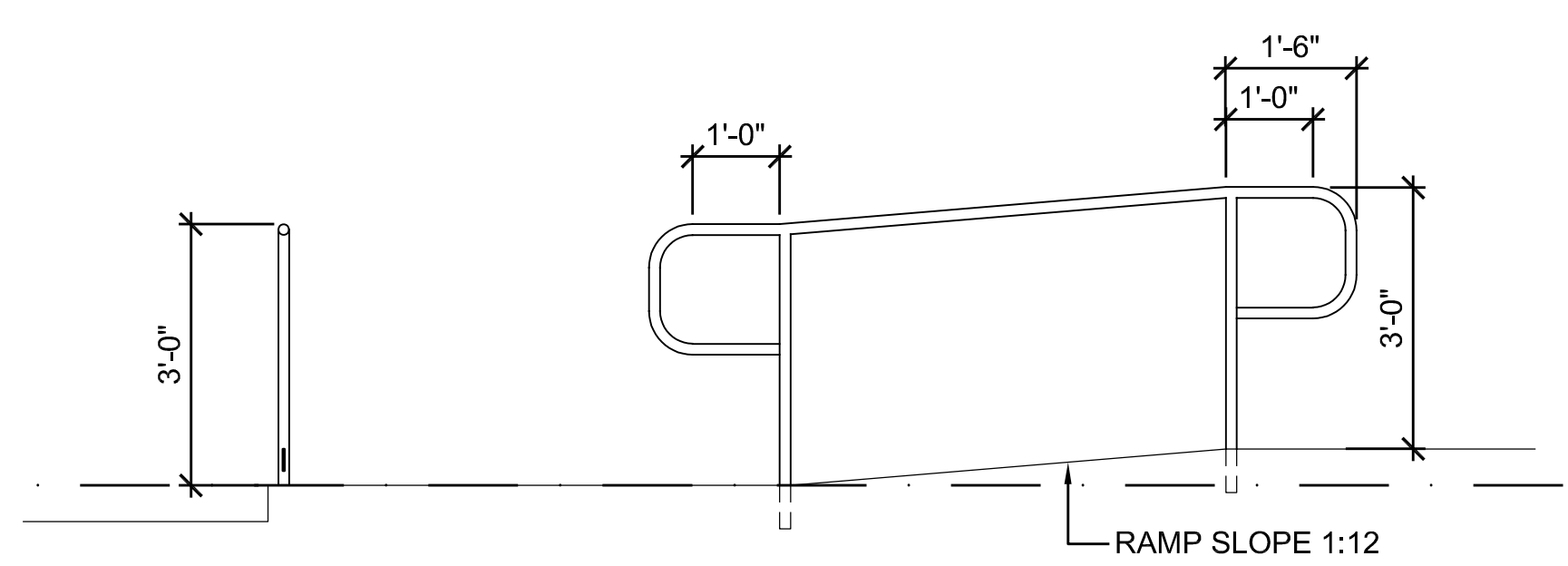
MARK	DATE	DESCRIPTION
ISSUE:		
PROJECT NO:	25102	
CAD DWG FILE:	G-101 - Site Plan.dwg	
PLOTTED:	May 01, 2026 - 3:04PM	
DESIGNED BY:	GM	
DRAWN BY:	EC	
CHECKED BY:	GM	

SHEET TITLE  
**SITE PLAN - GRADING**





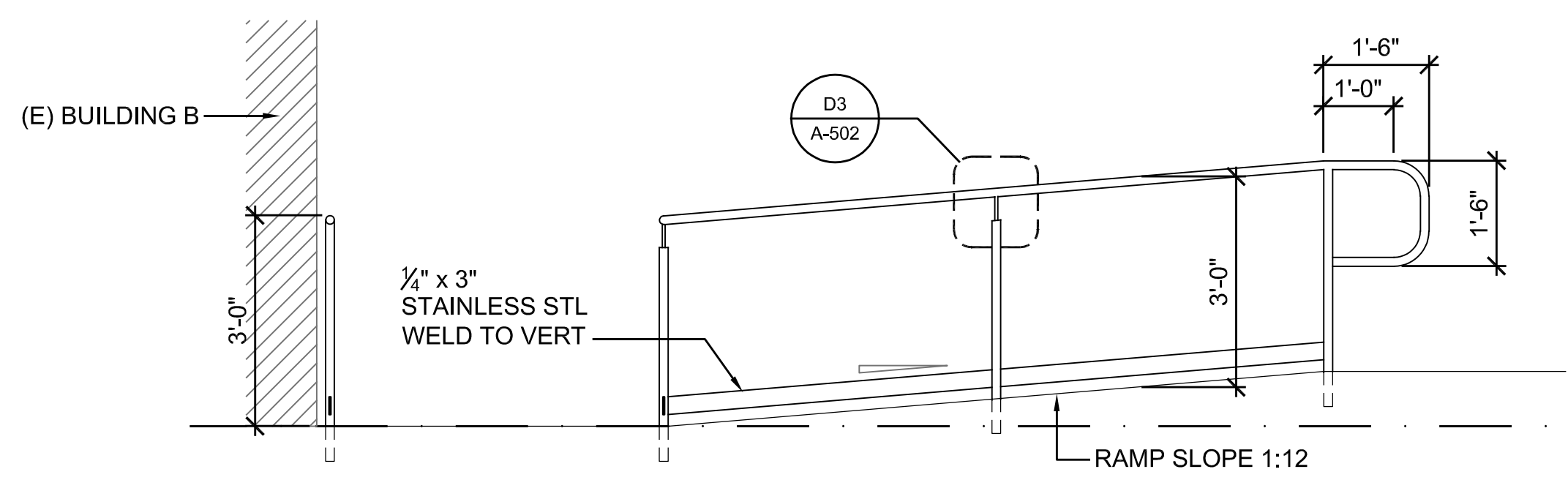




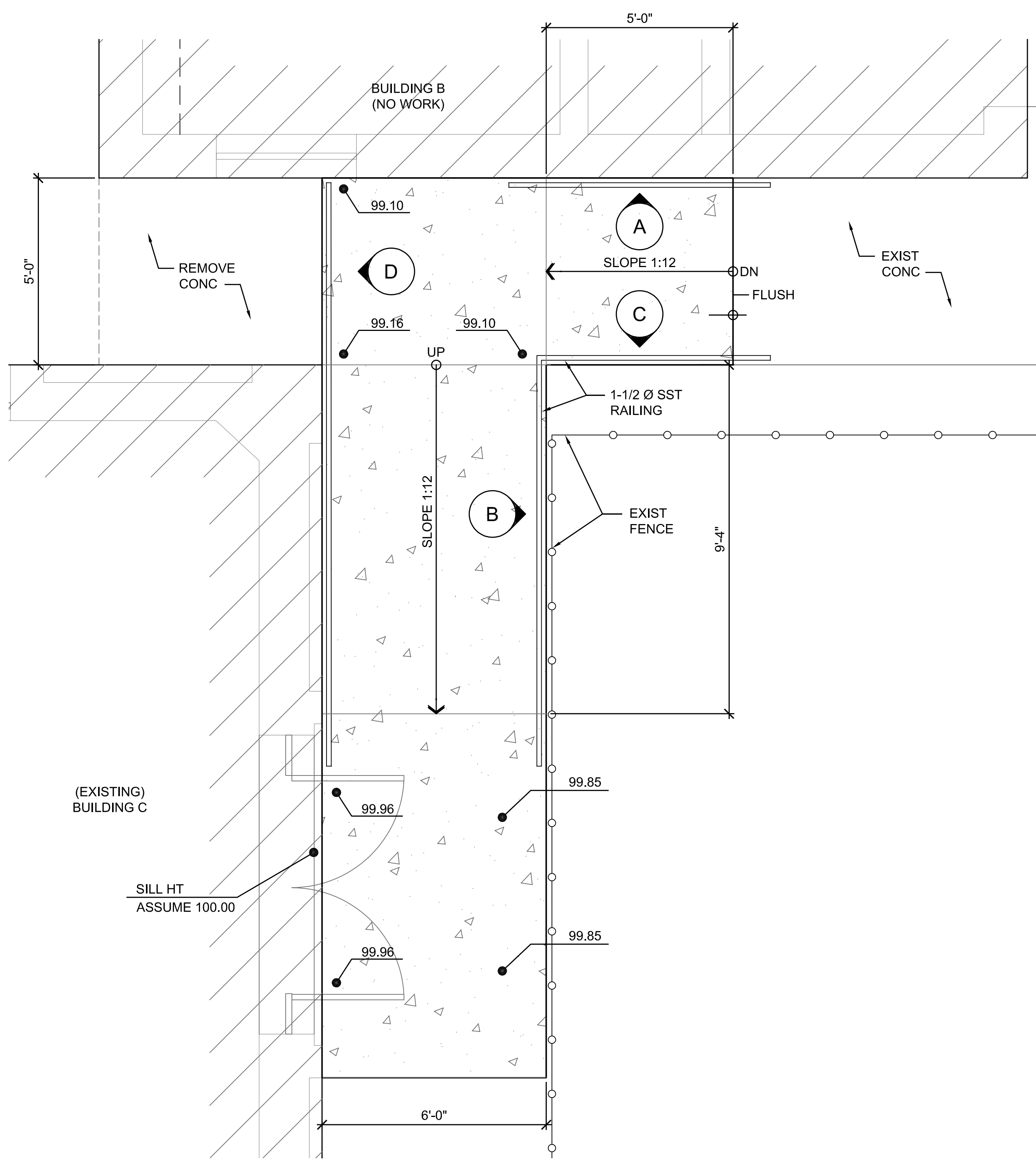
ELEVATION - A



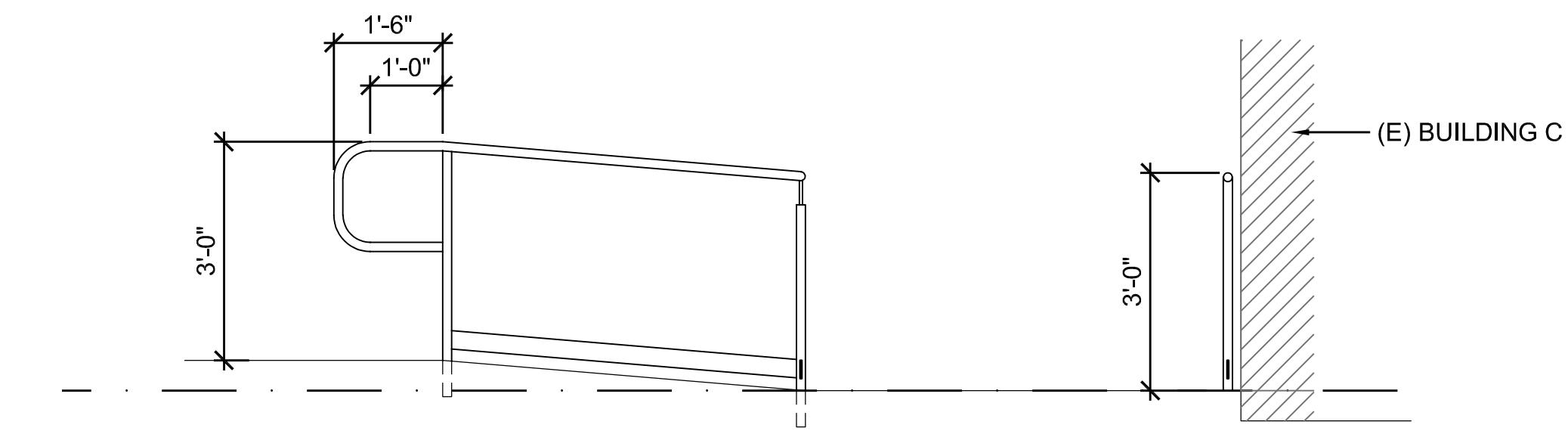
D1 DETAIL @ MIDDLE POST



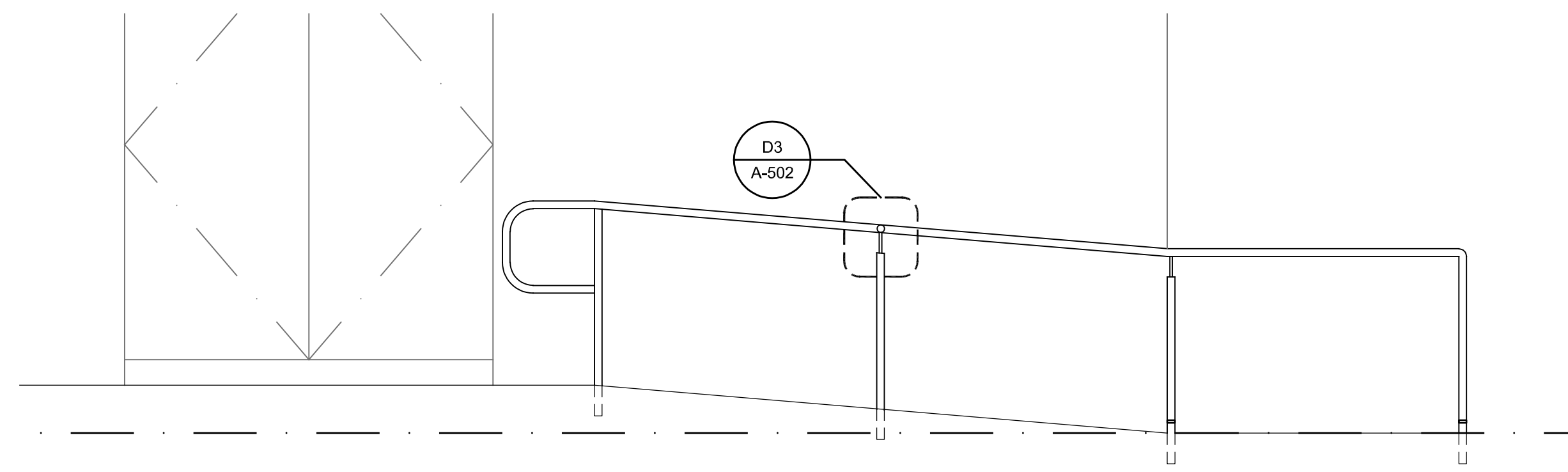
ELEVATION - B



A3 RAMP DETAIL

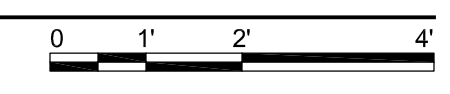


ELEVATION - C



ELEVATION - D

A1 RAMP ELEVATIONS  
1/2" = 1'-0"  
REF FROM: A3/A-502



**MASON**  
119 Merchant Street, Suite 501  
Honolulu, Hawaii 96813  
808 536 0556  
ARCHITECTURE & HISTORIC CONSULTING

This work was prepared by me or under my supervision and construction of this project will be under my observation.

*Glenn E. Mason*  
Signature  
4/30/2028  
Expiration Date of the License

GLENN E. MASON  
LICENSED PROFESSIONAL ARCHITECT  
No. 4073  
HAWAII, U.S.A.

PROJECT  
**GRADING, CONCRETE AND OTHER REPAIRS HISTORIC KAKAAKO PUMP STATION**  
653 ALA MOANA BLVD  
HONOLULU, HAWAII 96813  
TMK: 2-1-015:063

MARK	DATE	DESCRIPTION
ISSUE:		
PROJECT NO:	25102	
CAD DWG FILE:	A-501 Details.dwg	
PLOTTED:	May 01, 2026 - 3:13PM	
DESIGNED BY:	GM	
DRAWN BY:	EC	
CHECKED BY:	GM	

SHEET TITLE  
**RAMP DETAILS**

**A-501**  
SHEET OF